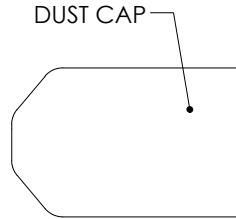
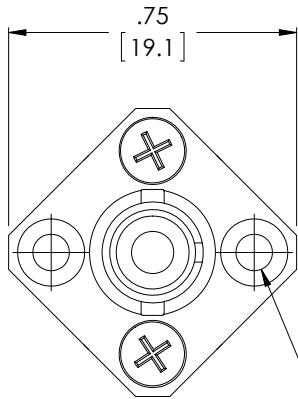
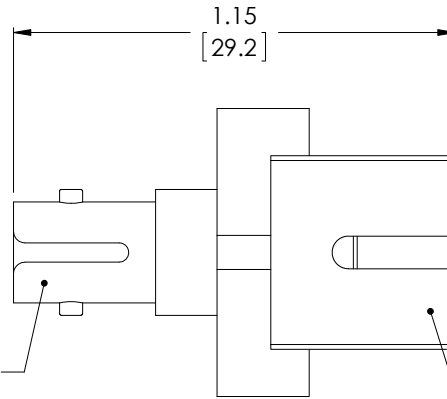


THE INFORMATION CONTAINED IN THIS DRAWING IS THE SOLE PROPERTY OF L-COM, INC. ANY REPRODUCTION IN PART OR WHOLE WITHOUT THE WRITTEN PERMISSION OF L-COM, INC. IS PROHIBITED.

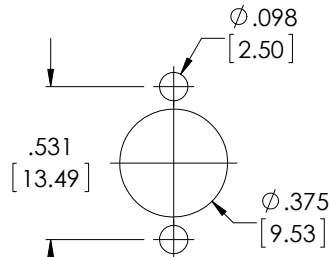
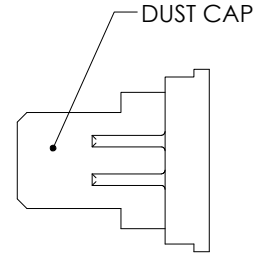
REVISIONS			
REV	DESCRIPTION	DATE	APPROVED
A	DRAWING REPLACES FOA-201-OD1	6/24/14	D. DESJARDIN
B	ECN 9010 CHANGE SLEEVE MAT. TO CERAMIC, ADDED TO DESCRIPTION	12/11/17	B. PUCHASKI



ST CONNECTOR



SC CONNECTOR



RECOMMENDED  
PANEL OPENING

#### NOTES:

- MATERIAL:  
SLEEVE: CERAMIC  
BODY: BRASS  
DUST CAP: ENGINEERING PLASTIC  
FINISH:  
BODY: NICKEL



- COMPONENT SHALL BE INDIVIDUALLY PACKAGED IN ACCORDANCE WITH L-COM SPECIFICATION PS-0031.

**REGULATORY COMPLIANCE:**  
CE2011/65/EU (RoHS DIRECTIVE)

UNLESS OTHERWISE SPECIFIED, DIMENSIONS ARE IN INCHES [mm] OVERALL CABLE LENGTH TOLERANCE: ≤12 [305] = +1 [25] / -0 >12 [305] ≤60 [1524] = +2 [51] / -0 >60 [1524] ≤120 [3048] = +4 [102] / -0 >120 [3048] ≤300 [7620] = +6 [152] / -0 >300 [7620] = +5% / -0% ALL OTHER DIMENSIONAL TOLERANCES: .X = ±.2 [5.08] .XX = ±.02 [5.1] .XXX = ±.005 [1.3] PROJECTION 	APPROVALS	DATE	 50 HIGH STREET NORTH ANDOVER, MA 01845	
	DRAWN BY C. MCCORMICK	12/28/2000		
	CHECKED BY D. PARHAM	12/28/2000	CATEGORY FIBER OPTICS	
	APPROVED BY R. CARRICK	12/28/2000	PRODUCT DESCRIPTION ADPTR, SQR/MTL ST-SC SMPLX CMRC	
COLOR VARIATIONS MAY OCCUR		SIZE <b>A</b>	FSCM NO. <b>43321</b>	DWG. NO. FOA-201
FOA-201-OD1		SCALE: NONE	CAD FILE: FOA-201.SLDDRW	REV. <b>B</b>
		SHEET 1 OF 1		