

6

5

4

3

2

1

F

E

D

C

B

A

F

E

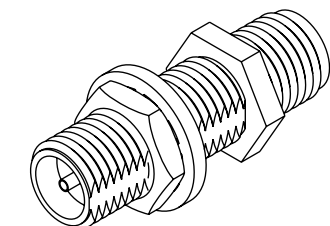
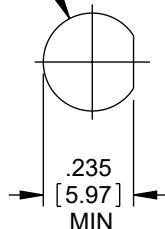
D

C

B

A

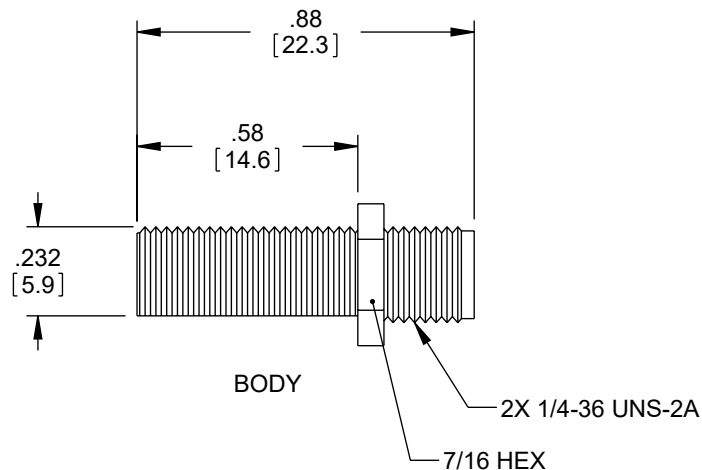
REVISION					
ZONE	REV	DESCRIPTION	DATE	CHANGED BY	APPROVED
	B	ECO-14513	04/16/2025	KGLEBOVA	DWANG

 $\phi .255 [6.48] \text{ MIN}$ RECOMMENDED  
MOUNTING HOLE

8mm HEX



NUT

LOCK  
WASHER

## NOTES:

1. MAX PANEL: .236 [6].
2. IMPEDANCE: 50OHMS.
3. FREQUENCY RANGE: DC ~11GHz.
4. VOLTAGE RATING: 500VOLTs PEAK.
5. WITHSTAND VOLTAGE: 1000V RMS.
6. INSERTION LOSS: .15dB MAX.
7. COMPONENT SHELL BE INDIVIDUALLY PACKAGED IAW L-COM SPEC. PS-0031.

REGULATORY COMPLIANCE:  
EU RoHS DIRECTIVE (MOST RECENT RELEASED VERSION).

THE INFORMATION CONTAINED IN THIS DRAWING IS THE SOLE PROPERTY OF INFINITE ELECTRONICS, INC. ANY REPRODUCTION IN PART OR WHOLE WITHOUT THE WRITTEN PERMISSION OF INFINITE ELECTRONICS, INC. IS PROHIBITED. THESE COMMODITIES, TECHNOLOGY OR SOFTWARE WERE EXPORTED FROM THE UNITED STATES IN ACCORDANCE WITH THE EXPORT ADMINISTRATION REGULATIONS. DIVERSION CONTRARY TO U.S. LAW PROHIBITED.

LC LG Rev-D5 Asize

6

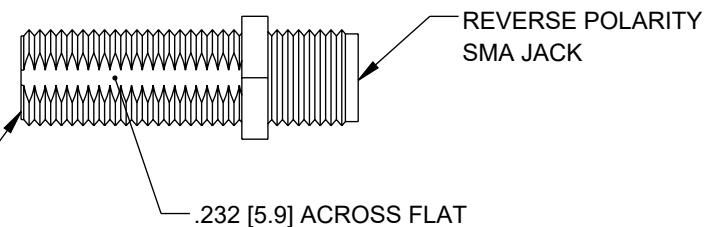
5

4

3

2

1

REVERSE POLARITY  
SMA JACK  
BULKHEAD MOUNT

UNLESS OTHERWISE SPECIFIED LEADING DIMENSIONS ARE INCHES DIMENSIONS IN [ ] ARE MILLIMETERS	
TOLERANCES:	
X = ±.2 [5]	FRACTIONS ± 1/32
.XX = ±.02 [0.5]	ANGLES ± 1°
.XXX = ±.005 [0.13]	
CABLE LENGTH TOLERANCES:	
≤12 [305] = +1 [25] / -0	
>12 [305] ≤ 60 [1524] = +2 [51] / -0	
>60 [1524] ≤ 120 [3048] = +4 [102] / -0	
>120 [3048] ≤ 300 [7620] = +6 [152] / -0	
>300 [7620] = +5% / -0	
ALL DIMENSIONS ARE FOR REFERENCE ONLY AND SUBJECT TO CHANGE WITHOUT NOTICE. UN-DIMENSIONED/NON-CRITICAL FEATURES MAY VARY IN SIZE AND LOCATION COLORS MAY VARY	

**L-com**  
an INFINIT® brandWebsite: [www.L-com.com](http://www.L-com.com)  
Phone: 1.800.341.5266 | 1.978.682.6936INTERPRET ALL DIMENSIONS AND  
TOLERANCES PER ASME Y14.5SCALE  
NONESHEET  
1 OF 1DESCRIPTION  
COAXIAL ADAPTER, RP-SMA JACK TO RP-SMA JACK BULKHEAD

SIZE	CAGE CODE	DRAWN BY	ITEM NO.	REV
A	43321	DCASTRO	AXA-RSJRSJB	B